



America's Lift Leader™



SIERRA INCLINE PLATFORM LIFT





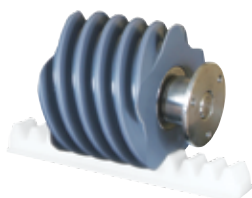
*“Staying in their own homes as they age is important to nearly all adults 50+”\**

©2011 AARP Research & Strategic Analysis survey of over 29,000 adults age 50+. Reprinted with permission.



*The Sierra IL500 shown with optional fold-down seat, emergency stop switch and 90° platform for multi-sided access. A wheelchair or scooter can easily travel up to 40 feet on a straight stairway. Maximum chair length is 36.”*

## INNOVATIONS



*Unique Worm Drive system is energy-efficient and needs no messy grease or lubricants.*



*Safety sensors on carriage and platform stop the lift instantly at obstacles.*



*Two Wireless Remotes included for convenient accessibility.*

# RAISING STANDARDS IN RESIDENTIAL ACCESS

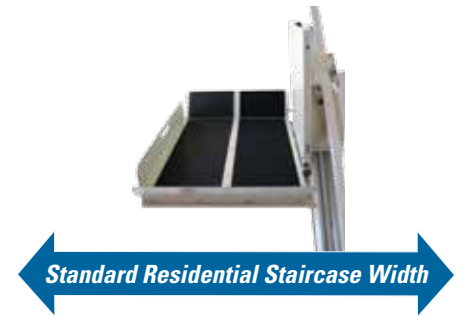
More than ever before, customers are demanding innovative solutions to enable them to stay in their homes as long as possible. Harmar's full range of solutions fit practically any situation and budget.

The innovative Sierra IL500 is the ideal example for superior quality, efficiency and ease of use. Choose it wherever a stairway lift doesn't fit a user's accessibility needs or a vertical platform lift isn't appropriate for residential use.

Designed to carry a wide range of wheelchairs and scooters, the IL500 provides a 500-lb capacity with an integrated seat option. It is light enough to be installed by one person and mounts so that the main carry load is supported by step brackets. It does not require wall modifications, saving significant time and installation costs.

## Sierra IL 500 Benefits:

- **Cost-Saving:** Designed for a one-person install with no major load-bearing wall modifications
- **Free-Standing Post Kit:** Allows a wall-free installation
- **13" wide when folded** and a 500 lb. capacity
- **Indoor and Outdoor models available**
- **Quality Assurance:** Every unit is weight-tested before shipping
- **Platform Options:** Right, Left, 90-degree, and 25" or 27.5" widths



*Space-saving platform folds to just 13" wide when not in use, allowing easy access to the stairs*



*Free-standing post kit eliminates need for wall mounting*

***Harmar delivers innovative accessibility solutions. And we back our products with the best customer service and most experienced support team in the industry.***



## Features

General Specifications	Sierra
Rated Load:	500 lbs. (227 kg)
Drive:	Rack and worm gear / 24 VDC 1/8 HP motor with brake
Power Supply:	115 VAC 15 amp grounded circuit
Control Circuit:	24 VDC
Platform:	25" x 36" Manual fold, gas shock assisted Power folding ramps for entry and exit
Folded Width:	13" folded
Travel:	40 feet maximum
Speed:	14 feet per minute
Controls:	Constant pressure rocker switch on platform Infrared Call / Send Control
Safety Design Standards:	ASME A18.1, Section 6 - Incline Platform Lifts ETL CAN/CSA B44.1 / ASME A17.5 - Elevator & Escalator Equipment ETL Listed 3148125
Safety Features:	Overspeed governor Upper and lower landing limits Upper and lower final limit Ramp obstruction sensors Under platform safety pan obstruction sensors Drive chassis obstruction sensors Non-skid surface
Warranty:	2-Year on parts / 1-Year outdoor model 10-Year on gear rack 1-Year on batteries

## Optional Accessories

Description	Item #
27.5" x 36" Platform (36.5" minimum width required):	IL515
27.5" x 36" 90 Degree Exit Platform:	IL520
Fold-Down Seat:	IL525
Free-Standing Post Kit (each - # treads / 2):	IL530
Outdoor Package:	IL5000D
Key Lock (Unit Only - Disable All Controls):	IL510
Emergency Stop Button:	IL511
Additional Foot of Track (Includes Track, Handrail and Mounting Brackets):	IL500R

